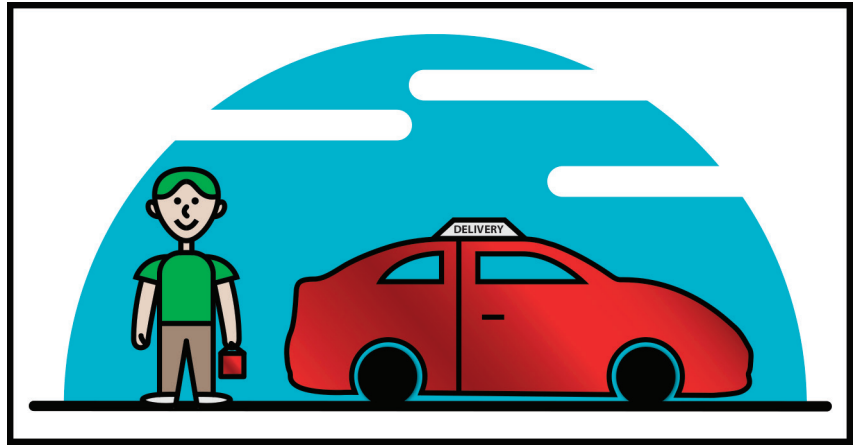




## Driver Assign

by Zoomifi, Inc



Assign a Driver or a second employee to an order to track who is handling an order and if they owe you CASH.

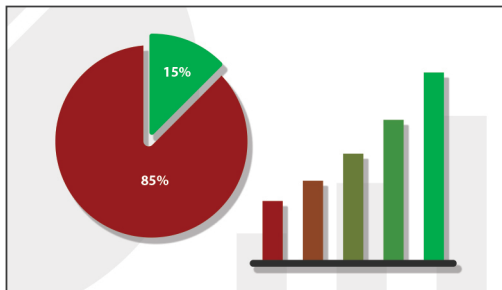
*Improve your business by becoming more efficient. The Driver Assign App allows you to create or add a second employee to an order and run reports to see who owes CASH for that order. Managing deliveries has never been easier. This App has the same functionality as the Orders App, but with additional features.*



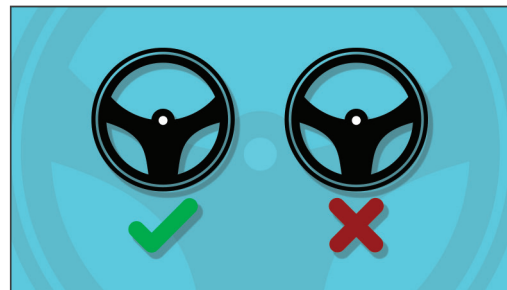
Use this App to replace the existing Orders App with added features



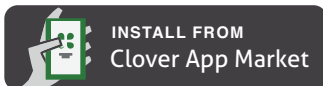
Run reports to see who is handling an order and if they owe CASH



Track your drivers' daily, weekly or monthly performance with ease



Quickly add or remove a driver if a staffing change occurs



INSTALL FROM  
Clover App Market

Last updated: Jan 27, 2016

